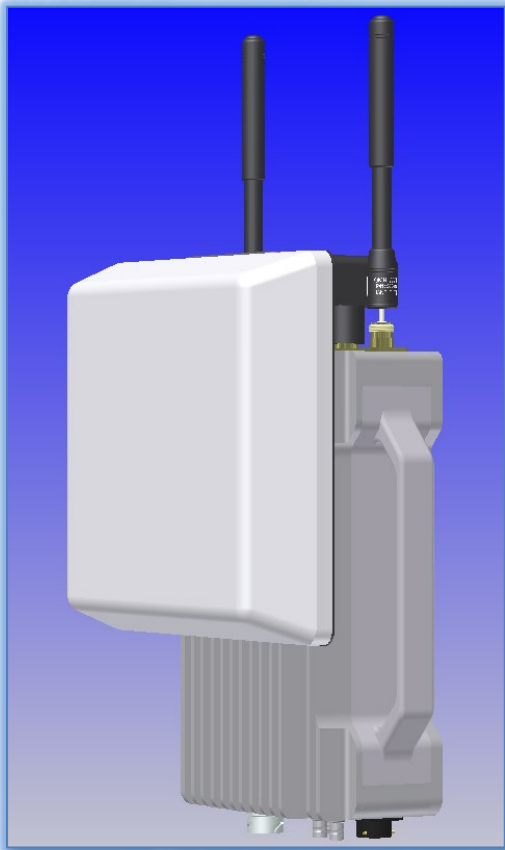


Nomad Portable ODU DENG TRANSCIVER

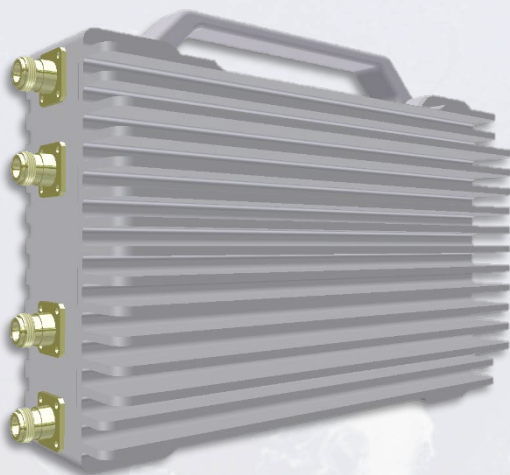
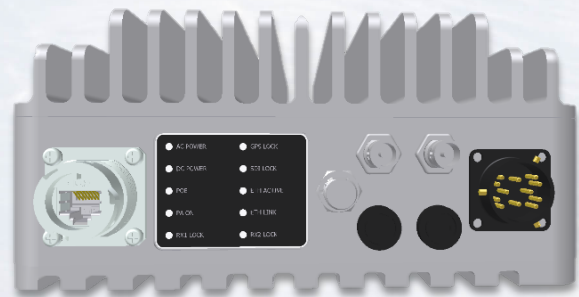
JANTEQ
CORPORATION

The Nomad Portable ODU is a dual DENG full duplex bidirectional IP Microwave radio transceiver system. A split box concept where the Outdoor Unit communicates with the Indoor Unit(s) (IDU) using IP over Ethernet. The Nomad can also act as a mini central receive site (with SFN) to fill RF dead zones.



Key Features

- Dual independent 2 input Receivers for 2 service operation.
- 4 input MRC diversity for single service mode.
- Duplexed transmit and receive port.
- AC (110/240V) or DC (12-32V) power and POE.
- DVB-T bandwidths of 4, 5, 6, 7 & 8 MHz
- +30dBm RF output with MER greater than 30dB. Digital pre-distortion and crest factor reduction for improved PA efficiency.
- ASI INPUT/OUTPUT
- Compatible with 15dBi Diversity Panel Antenna.
- Direct integration and complete remote control with the DENG Central Receive System.
- Multiple units can be configured as a SFN as well as add to the Central Receive network.



OFDM Receive

Diversity:	4 Input MRC (maximum ratio combing) diversity.
Bandwidth:	DVB-T 5/6/7/8MHz.
Modulation Mode :	EN300-744 DVB-T
Threshold:	-94dBm (@ 8 MHz QPSK 1/2 1/32)
Modulation:	QPSK, 16QAM, 64QAM
FEC:	1/2, 2/3, 3/4 5/6, 7/8
Guard Interval:	1/32, 1/16, 1/8, 1/4
Data Rate:	4 to 28 Mbps
Spectrum Inversion:	Automatic detection

Receive RF Performance

Frequency Range ODU:	Low Band.....2010-2110 MHz
	Mid Band2200-2300 MHz
	High Band.....2570-2620 MHz
IF Bandwidth:	4 MHz to 8 MHz
IF Linearity IM3:	>50 dB over entire input signal range
RF/IF Stability:	+/- 2.5 ppm
Step Size:	100/250kHz
RF Input Return Loss:	> 15dB
Noise Figure:	4dB
Maximum Input:	Input in band +10dBm

OFDM Transmit

Bandwidth:	DVB-T 5/6/7/8MHz.
Modulation Mode :	EN300-744 DVB-T
Modulation:	QPSK, 16QAM, 64QAM
FEC:	1/2, 2/3, 3/4 5/6, 7/8
Guard Interval:	1/32, 1/16, 1/8, 1/4
Data Rate:	4 to 28 Mbps
Spectrum Inversion:	Automatic detection

Transmit RF Performance

PA Frequency Range:	Low Band:.....2010-2110 MHz
	Mid Band:2200-2300 MHz
	High Band.....2570-2620 MHz
Output Power:	All Bands: 1 Watt
	Shoulders better than -45dB MER >30dB

RF Connectors

Receive Connectors	4 x 50 Ohm N-Female
Transmit Connector	Duplexed onto RX Port

Bottom Back Panel Connections

ASI Input:	Allows External ASI to be sourced by transmitter.....	1 x 75 Ohm BNC
ASI Output:	Allows received signal to be fed to external decoder or ODU.....	1 x 75 Ohm BNC
Ethernet	Ethernet for connection to IDU unit.....	1 x RJ45
POWER	AC mains connector fused & filtered:	1 x MIL SPEC
	DC 11-32V DC fused:	1 x MIL SPEC
Physical Size ODU		
Outdoor Unit:	Size:	15" L x 9" W x 8"H

Environmental

Temperature	-10 to +50C
Ingress protection	IP67